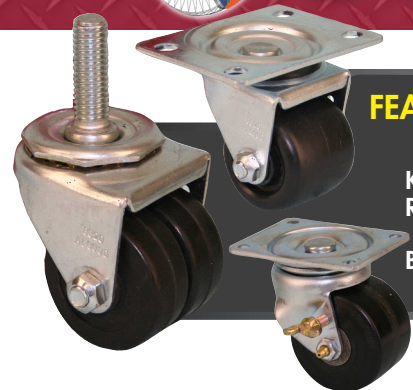




# 8000 LOW PROFILE CASTERS

## SERIES

# 600 LBS



### FEATURES

**KINGPIN:** 5/16" rivet  
**RACEWAY:** 3/16" diameter over and under race; hardened steel load bearings  
**BUSHING:** Nylon, steel bearing

**AXLE&NUT:** 5/16" axle and nut  
**FINISH:** Bright chrome  
**HARDENED:** Washer  
**SPECIAL:** Wide selection of specialty stems and plates

### EXCELLEN FOR:

- Pianos & heavy equipment
- Floor protection & excellent mobility
- Business machines

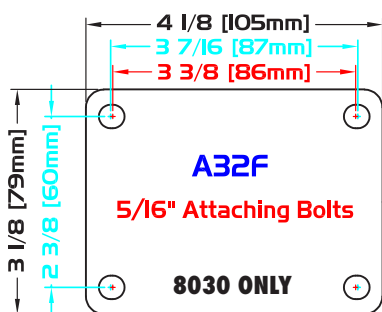
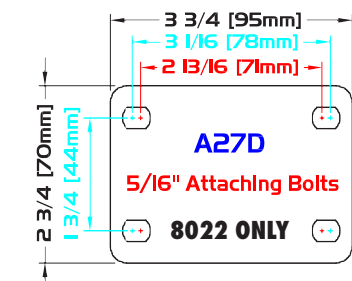


### OPTIONS:

- TSB Thumb Screw Brake (included in 8030 only)

WHEEL		CASTER				PART NUMBER		Caster Weight (lbs)
Diameter	Tread Width	Capacity Lbs.	Bearing Type	Swivel Radius	Overall Height	Wheel Type	Swivel	
2" Dual Wheel	7/8"	150	Plain	1 13/16"	2 7/8"	ProTech™ Flat	S8022-***-PROF	0.82
		160	Nylon			Soft Rubber	S8022-***-SR	1.10
		200	Nylon			Hard Rubber	S8022-***-HR	1.10
		200	Steel			Envirothane™	S8022-***-J	0.88
		200	Steel			Envirothane™ Grey	S8022-***-UG	0.88
2"	1 3/4"	200	Plain	1 13/16"	2 7/8"	Polyolefin	S8022-***-PO	0.84
3"	1 13/16"	600	Roller	2 5/16"	4 1/16"	Phenolic	S8030-A32F-PH-RB-TSB-Z	2.50

### PLATE DIAGRAMS



STANDARD 8022 PLATE: A27D  
 STANDARD 8030 PLATE: A32F

D Plate Thickness: 3/32"  
 F Plate Thickness: 5/32"

### STEMS

#### THREADED STEMS HEX NUT (8022 only)

***	DIAMETER	LENGTH	TYPE
1/2-13X1 1/2HN	1/2"	1 1/2"	NC



#### THREADED STEMS HEX WASHER (8022 only)

***	DIAMETER	LENGTH	TYPE
1/2-13X1HW	1/2"	1"	NC
1/2-13X1 1/2HW	1/2"	1 1/2"	NC



#### ROUND STEMS (8022 only)

***	DIAMETER	LENGTH	TYPE
437SX1 5/16	7/16"	1 5/16"	Friction Ring



437SX1 5/16